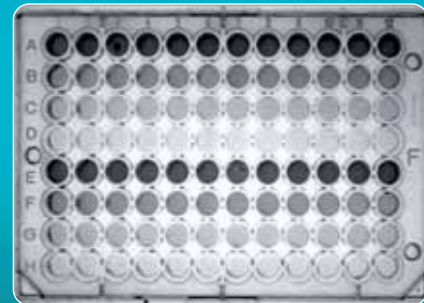


Autoradiography imaging



Ethidium bromide stained DNA
Super-Bright transilluminator



Elisa microtitration imaging



Industry standard

- Megapixels resolution
- 16-bit – exquisite pixel depth
- Highly sensitive
- Free user-friendly software
- Exclusive Image Master assistant to get the optimum image
- Good laboratory practice compliant

> KEY FEATURES

- PC based system for publication and analysis grade imaging
- Megapixels resolution / Firewire® interface
- Highly sensitive scientific CCD camera and optics
- Manual or motorized zoom lens / Multi-positions filter slide
- Unique Vilber Lourmat filters for precise imaging & superior results
- Free software for image acquisition & analysis
- Image Master™ feature to easily get the optimum image
- Pure image integrity & GLP compliance
- Exclusive Vilber Lourmat's UV Master™ technology
- Compact metalwork's darkroom builds for robustness

> APPLICATIONS

• NUCLEIC ACID DETECTION

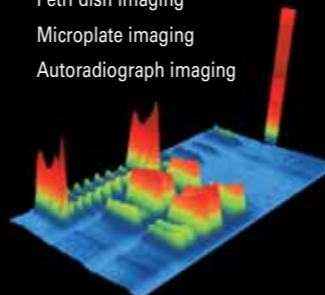
Ethidium bromide, SYBR™ Green, SYBR™ Gold, Texas red™, Gel Star™

• OTHER

Petri dish imaging
Microplate imaging
Autoradiograph imaging

• PROTEIN DETECTION

Coomassie blue, Sypro™ Ruby, Sypro™ Orange, Sypro™ Red, Silver Star™, Fluorescein



> REFERENCE LIST

- Wuhan University (Wuhan, China)
- Institut Gustave Roussy (Paris, France)
- INRA (Jouy en Josas, France)
- GSF (National Research Center for Environment and Health) (Oberschleißheim, Germany)
- Westmead Millenium Institute for Medical Research (Sydney, Australia)



> TESTIMONIALS

“ Our Bio-Vision system offers everything we need: excellent results, user friendly image acquisition and free software for all the users. We appreciate the darkroom UV epillumination as well as the filter slide for imaging of different dyes. ”

The roll-out transilluminator is very convenient for gel cutting and the door UV security switch is a great protection.





Fast, accurate and easy image acquisition



Complete and flexible image enhancement



Quick and simple analysis

Industry standard

Fast, accurate and easy image acquisition

VISION-CAPT is the complimentary software supplied with the BIO-VISION system. It includes a powerful and easy-to-use image acquisition module. An automatic pixel saturation warning and a display of the image dynamic enhance the image acquisition. They ensure optimum quality of the final image, which can then be instantly printed or saved for further analysis or publication.

Quick and simple analysis

In addition to image acquisition, VISION-CAPT software offers multiple analysis features. It includes three main analysis components: molecular weight, band quantification, colony counting.

Complete and flexible image enhancement

The image enhancement module enables editing of comments, image inversion, contrast and brightness adjustment, as well as the use of pseudo colors for colorimetric samples.

> VERSATILE & UPGRADEABLE

In standard, the Bio-Vision systems are ideal for a wide range of fluorescence applications. You can also customize your own system or upgrade later thanks to different options to add versatility and imaging experiments:

- Super-Bright UV filter technology for multi-applications gel imaging
- StarLight RGB LED epi-illumination module for bioluminescence, in-vivo and fluorescence on membrane
- Filtered UV epi-illumination modules
- PC controlled motorized scientific zoom lens
- UV to white light conversion screen for white light samples such as protein gels or autoradiographs
- UV to blue light conversion screen for dyes such as GFP II™, SYBR Green™ or Sypro Orange™.
- Large variety of interchangeable filters or Universal configuration
- Bio-1D advanced image analysis software

> COMPLIMENTARY SOFTWARE

• IMAGE ACQUISITION

Real time and integration time modes
...

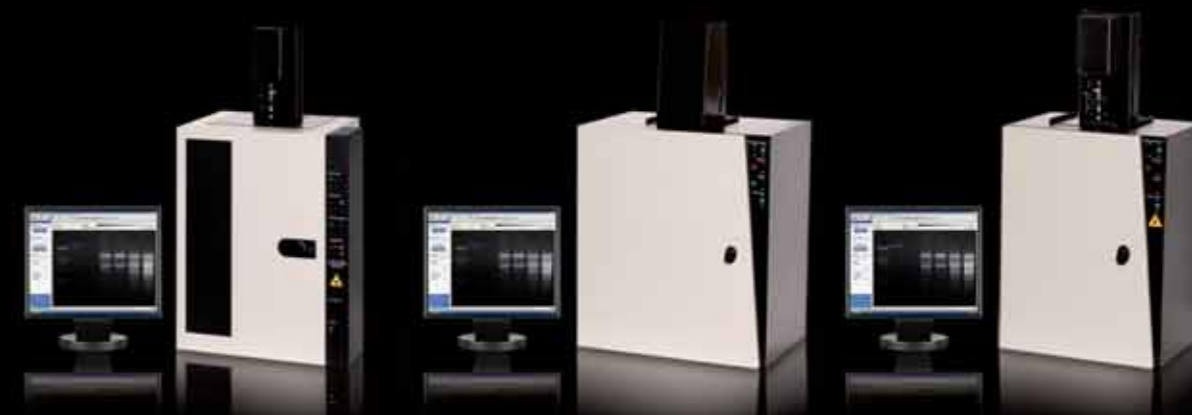
• IMAGE ENHANCEMENT

Editing of comments and symbols
...

• IMAGE ANALYSIS

Molecular weight calculation
...

Complete list of features page 39



SPECIFICATIONS	BIO-VISION 3000	BIO-VISION 1500	BIO-VISION 1000
Camera	Monochrome scientific grade CCD camera. Real time and integration time.	Monochrome scientific grade CCD camera. Real time and integration time.	Monochrome scientific grade CCD camera. Real time and integration time.
Pixel depth	4.8 orders of magnitude 16-bit , 65 536 grey levels. 3 user-controlled pixel depth modes: 16-bit, 12-bit, 8-bit	4.8 orders of magnitude 16-bit , 65 536 grey levels. 3 user-controlled pixel depth modes: 16-bit, 12-bit, 8-bit	4.8 orders of magnitude 16-bit , 65 536 grey levels. 3 user-controlled pixel depth modes: 16-bit, 12-bit, 8-bit
Resolution	Megapixels imaging 1.400.000 pixels. Pixel size: 7.4 µm x 7.4 µm. Binning modes	Megapixels imaging 1.400.000 pixels. Pixel size: 7.4 µm x 7.4 µm. Binning modes	Megapixels imaging 1.400.000 pixels. Pixel size: 7.4 µm x 7.4 µm. Binning modes
Grade	Ultra high sensitivity for fluorescence. Scientific grade camera. Chip quality: Grade 0, zero defect.	Ultra high sensitivity for fluorescence. Scientific grade camera. Chip quality: Grade 0, zero defect.	Ultra high sensitivity for fluorescence. Scientific grade camera. Chip quality: Grade 0, zero defect.
Camera device	Progressive scan. FireWire®/IEEE 1394 interface.	Progressive scan. FireWire®/IEEE 1394 interface.	Progressive scan. FireWire®/IEEE 1394 interface.
Zoom	Scientific grade zoom lens. Manual or motorised configurations.	Scientific grade zoom lens. Manual or motorised configurations.	Scientific grade zoom lens. Manual or motorised configurations.
Software	Bio-Vision is supplied with the Vision-Capt software for image enhancement and basic image analysis. The Bio-Vision images are compatible with Bio-1D and Bio-Gene software for quantification: transform your 1D gel into 3D results.		

CONFIGURATIONS

	CN-3000 darkroom	CN-1500 darkroom	CN-1000 darkroom
Darkroom	Includes a slide-out build-in transilluminator & UV security switch. Multi-positions filter slide. Upgradable to StarLight module.	Includes a slide-out build-in transilluminator & UV security switch. Multi-positions filter slide.	Includes a slide-out build-in transilluminator & UV security switch. Multi-positions filter slide.
Epi-illumination	Uniform white light or UV light source.	Overhead white light for gel positioning.	Overhead white light for gel positioning
Fluorescence source	Electronic & microprocessor controlled transilluminator for enhanced imaging and reduced heat to protect your gel. 312nm – 8-watt. Available filter size: 21x26 or 20x20 cm. Super-Bright filter available (21x26 cm)	Electronic & microprocessor controlled transilluminator for enhanced imaging and reduced heat to protect your gel. 312nm – 15-watt. Available filter size: 25x35, 21x26 or 20x20 cm. Super-Bright filter available (21x26 cm)	Electronic & microprocessor controlled transilluminator for enhanced imaging and reduced heat to protect your gel. 312nm – 8-watt. Available filter size: 21x26 or 20x20 cm. Super-Bright filter available (21x26 cm)